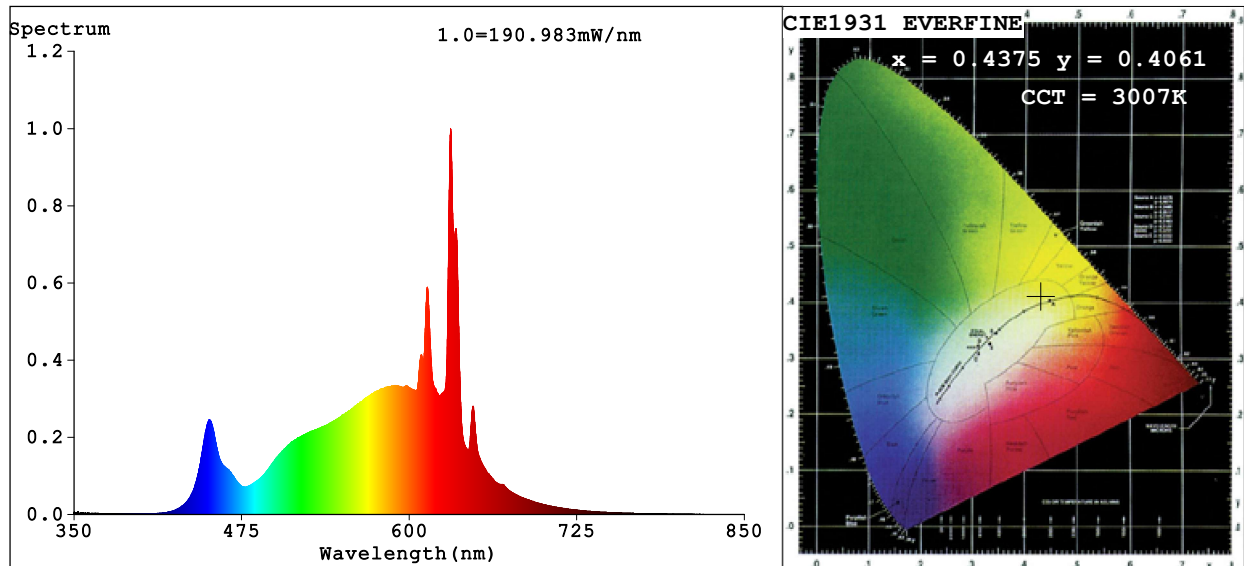


## Spectrum Test Report



### Color Parameters:

Chromaticity Coordinate:  $x=0.4375$   $y=0.4061$   $u'=0.2501$   $v'=0.5222$

CCT=3007K (Duv=0.0007) Dominant WL:Ld =582.5nm Purity=53.2%

Ratio:R=24.2% G=73.3% B=2.6%; Peak WL:Lp=630.9nm FWHM=8.2nm

Render Index:Ra=90.7 CRI=86.9 TM30:Rf=89 Rg=100

R1 =91 R2 =94 R3 =96 R4 =91 R5 =90 R6 =94 R7 =91

R8 =79 R9 =49 R10=85 R11=92 R12=76 R13=91 R14=97 R15=86

### Photo Parameters:

Flux = 3799 lm Eff. : 125.87 lm/W Fe = 11.08 W

### Electrical parameters:

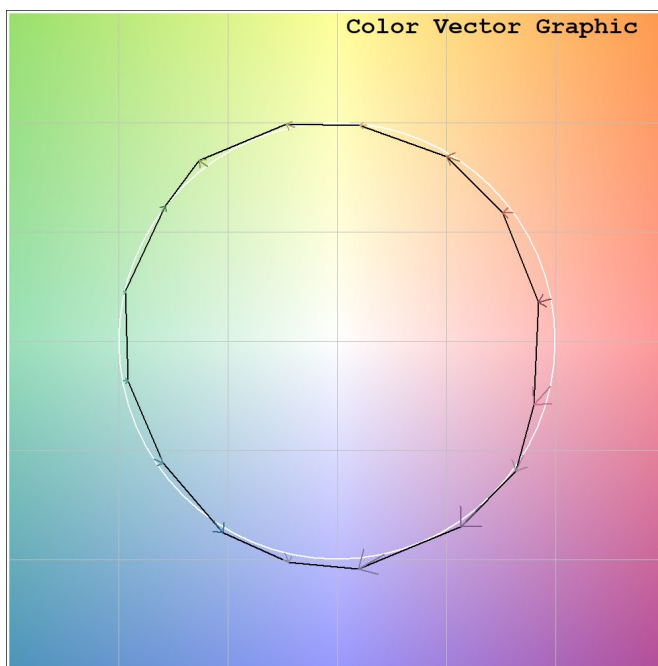
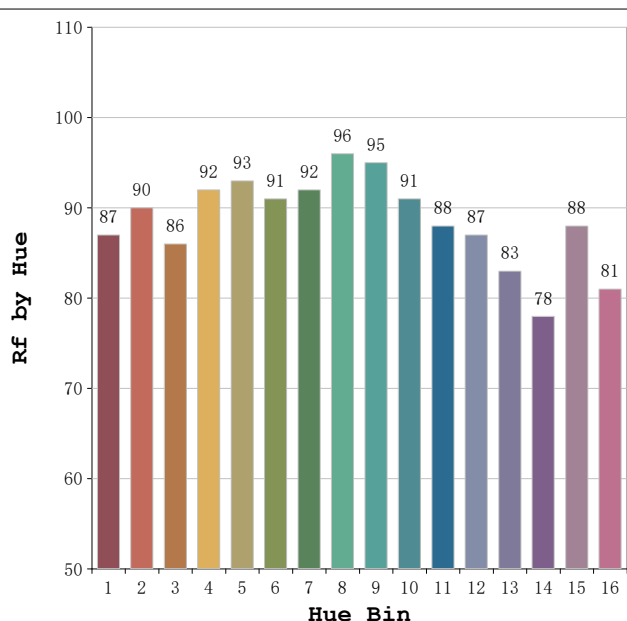
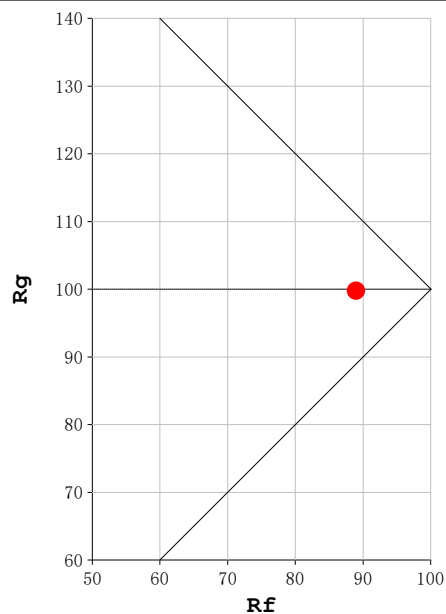
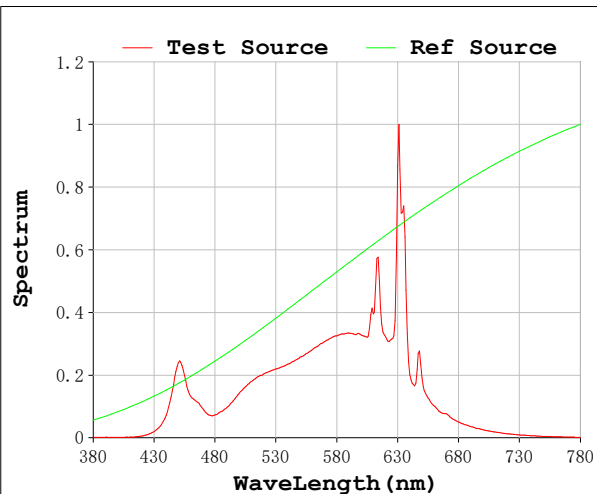
V = 230.06 V I = 0.1372 A P = 30.18 W PF = 0.9566

Status: Integral T = 167 ms Ip = 51985 (79%)

Model:Spotia 30w Balnco  
Tester:Sergio Carneros  
Temperature:20Deg  
Manufacturer:Luz Negra

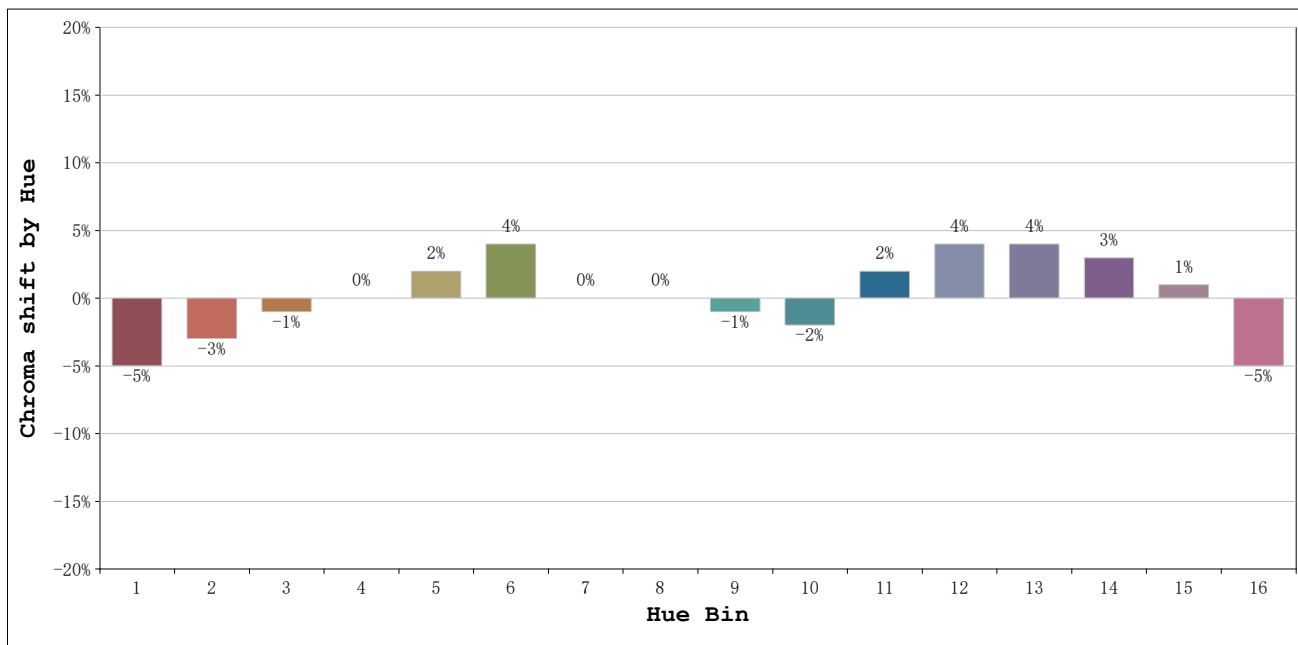
Number:3000k 56°  
Date:2026-03-23 11:20:38  
Humidity:50%  
Remarks:1 unidad

**Rf: 89**      **CCT: 3007 K**      **u': 0.2501**  
**Rg: 100**      **Duv: 0.0007**      **v': 0.5222**



Model:Spotia 30w Balnco  
 Tester:Sergio Carneros  
 Temperature:20Deg  
 Manufacturer:Luz Negra

Number:3000k 56°  
 Date:2026-03-23 11:20:38  
 Humidity:50%  
 Remarks:1 unidad



Hue Bin	Hue Angle	Rf	Graphic shift(%)	
			Chroma	Hue
1	0.0° - 22.5°	87	-5	0
2	22.5° - 45.0°	90	-3	3
3	45.0° - 67.5°	86	-1	6
4	67.5° - 90.0°	92	0	3
5	90.0° - 112.5°	93	2	4
6	112.5° - 135.0°	91	4	2
7	135.0° - 157.5°	92	0	-3
8	157.5° - 180.0°	96	0	-1
9	180.0° - 202.5°	95	-1	0
10	202.5° - 225.0°	91	-2	4
11	225.0° - 247.5°	88	2	6
12	247.5° - 270.0°	87	4	3
13	270.0° - 292.5°	83	4	-12
14	292.5° - 315.0°	78	3	-12
15	315.0° - 337.5°	88	1	-7
16	337.5° - 360.0°	81	-5	-9

Model:Spotia 30w Balnco  
 Tester:Sergio Carneros  
 Temperature:20Deg  
 Manufacturer:Luz Negra

Number:3000k 56°  
 Date:2026-03-23 11:20:38  
 Humidity:50%  
 Remarks:1 unidad